

Person-centred inclusive abortion care: global evidence



Professor Angela Dawson, University of Technology Sydney, Australia

angela.dawson@uts.edu.au



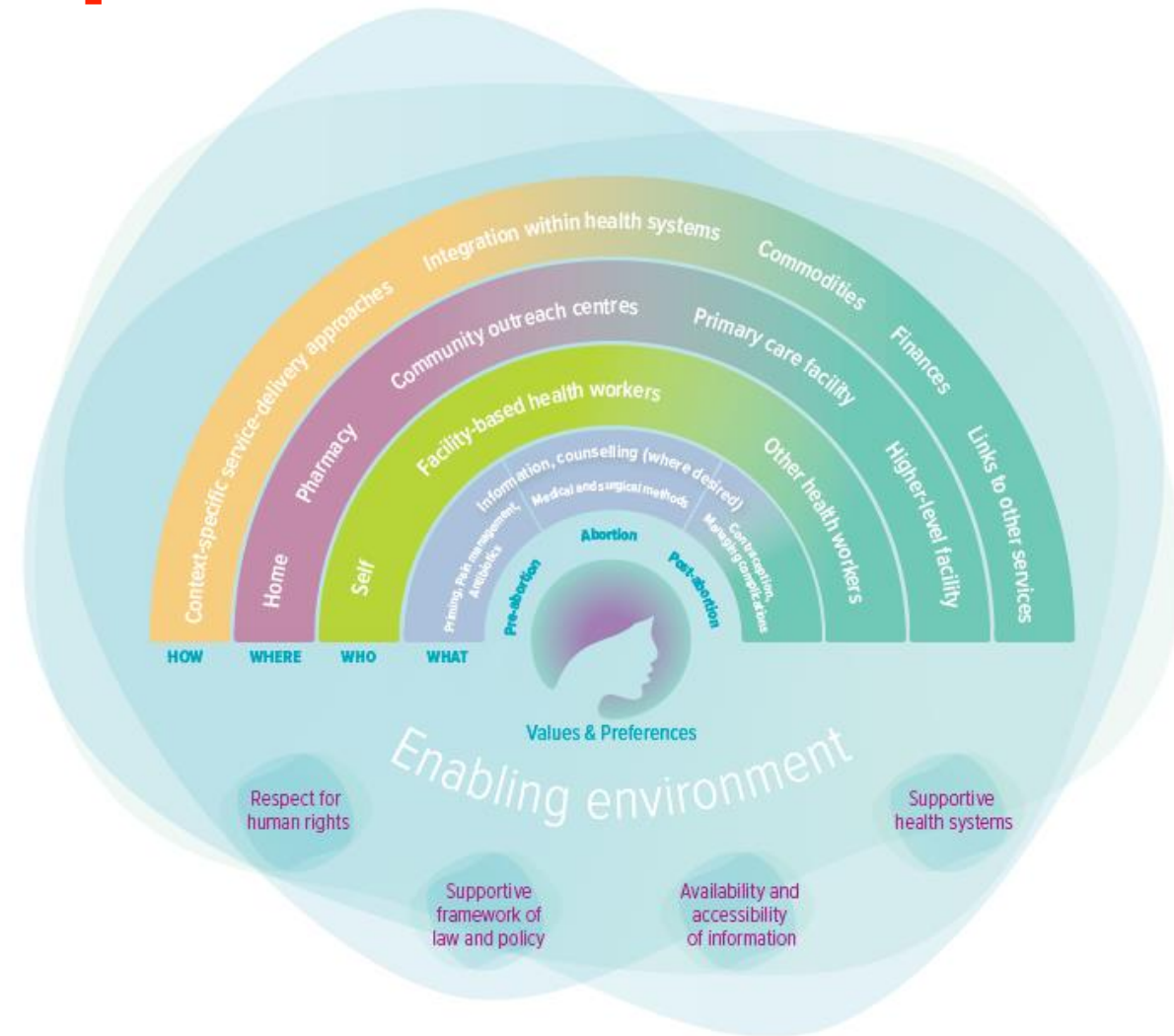
Care Centred Discourses in Abortion



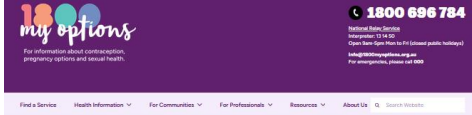
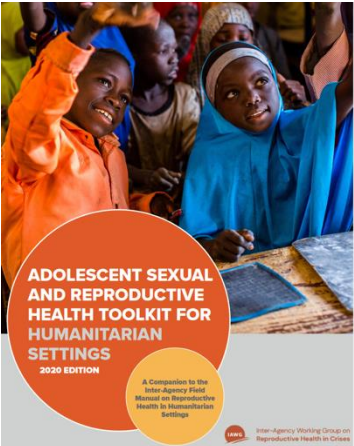
Equity, inclusivity and people-centred care

(WHO ACG 2022)

- embraces people of all sexual orientations, abilities, ethnicities and economic levels & celebrates this diversity
- Addressing disparities & inequities in healthcare
- Rights based
- “critical that the attitudes and behaviours of health workers be inclusive, non-judgemental and non-stigmatizing, and that they promote safety and equality” (WHO ACG 2022)



Person-centred inclusive abortion care guidance & services



For Communities | Refugees + Asylum Seekers

Refugees + Asylum Seekers



Good health and wellbeing is vital to refugees and asylum seekers' ability to settle successfully in the community.

Refugees and asylum seekers often have multiple and complex health issues. This may be caused by experiences of detention, torture, poverty, trauma, and poor access to healthcare. However, sexual and reproductive health services are often under-used by migrant and refugee communities, which can lead to poor knowledge of, and access to, contraception, STI screening and unplanned pregnancy support.

Finding a refugee and asylum seeker health service

In Victoria, there are many general and specialist refugee health and community care services. Asylum seekers can access most Victorian public health services, such as community health services, and have special access schemes for public hospital services.

If you are a refugee or asylum seeker, or advocating on behalf of a refugee or asylum seeker, 1800 My Options can help you find appropriate sexual and reproductive healthcare.

Contact us on 1800 696 784 (Weekdays 9am – 5pm), or email info@1800myoptions.org.au

If you are not comfortable speaking English, please state your preferred language when you call and we will find you an interpreter.



Get financial support with our abortion fund partners

If you're worried about being able to afford an abortion, an abortion fund may be able to help. They team up with abortion funds in select states to help provide financial assistance to eligible patients.

new river
abortion access
fund.

Indigenous
Women
Rising

cobalt
ABORTION FUND

EMA
Eastern MA Abortion Fund

COLORADO SOULA PROJECT

NORTHWEST
ABORTION
ACCESS FUND

ACCESS
REPRODUCTIVE JUSTICE

Change the
Way We
Talk About
Sex

Recommendations for Indigenous women and 2SLGBTQIA+ people (Monchalin)

1. location, comfort, and having the autonomy to choose where the abortion takes place;
2. Holistic post-abortion supports
3. accessibility, availability, and awareness of non-biased and non-judgemental information;
4. companionship, advocacy, and logistical help before and during the abortion from a support person
5. cultural safety and the incorporation of local practices and knowledges.

Abortion access impacts not only women, but also two-spirit, transgender, and gender diverse Indigenous Peoples all over Turtle Island.

Two-Spirit people face additional barriers to accessing reproductive health services due to discrimination against those who do not conform to the gender binary.

Access to abortion is not just a cisgender, heterosexual woman's issue; it extends beyond the gender binary.

Two-spirit people have been traditionally respected and honoured by their communities. The gender binary was forced upon Indigenous Peoples through events such as residential schools, which operated from 1831 to 1996.

Assessing Person-centred abortion (Sudhinaraset 2020, 2024)

- Dignity/ Respect
- Privacy/
Confidentiality
- Autonomy
- Communication
- Supportive care



- Time to care
- Treated with respect
- Friendly
- Treated differently
- Cared
- Privacy
- Record confidentiality
- Pain medication given
- Paid attention
- Verbal abuse
- Physical abuse
- Enough staff
- Took best care
- Trusts
- Safe
- Introduced self
- Called by name
- Involvement in care
- Consent before procedure
- Explain exams
- Explain medicines
- Ask about feeling
- Ask Questions
- Ask about pain

Advocacy

Be a vocal ally- lead as a role model, clinical champions

Adopt Inclusive language for activism

Insure translation into Policy & Practice



Thank you



Quality Person- Centred inclusive abortion care guidelines

AGREE II

Domain 1. Scope and Purpose

Domain 2. Stakeholder Involvement

Domain 3. Rigour of Development

Domain 4. Clarity of Presentation

Domain 5. Applicability

Domain 6. Editorial Independence

DOMAIN 2. STAKEHOLDER INVOLVEMENT

4. The guideline development group includes individuals from all relevant professional groups.

1 Strongly Disagree	2	3	4	5	6	7 Strongly Agree
------------------------	---	---	---	---	---	---------------------

Comments

5. The views and preferences of the target population (patients, public, etc.) have been sought.

1 Strongly Disagree	2	3	4	5	6	7 Strongly Agree
------------------------	---	---	---	---	---	---------------------

Comments

6. The target users of the guideline are clearly defined.

1 Strongly Disagree	2	3	4	5	6	7 Strongly Agree
------------------------	---	---	---	---	---	---------------------